



Technical Data Sheet

KTL-8N

PTFE Micropowder

KTL-8N is the PTFE micropowder as additive for paints and coatings. This grade has been used for so many types of paints & coatings.

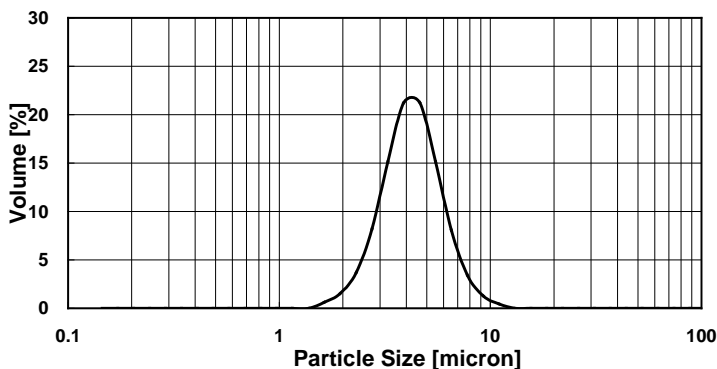
1. Features

KTL-8N is the fine powder of completely sintered PTFE. The grain of KTL-8N is hard, so it is hard to be crushed. The figure is nearly spherical with edges rounded off. KTL-8N can be dispersed into solvents and varnishes with light stirring. Because there is no foaming or increasing viscosity, you can apply PTFE in concentrated amounts, even 50wt%.

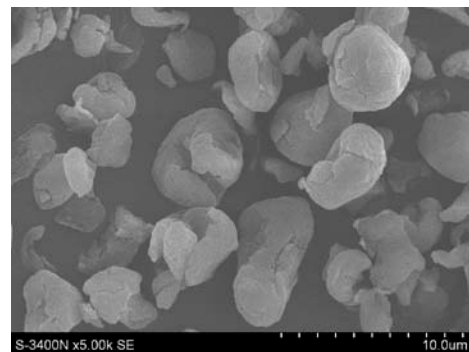
2. Properties

Property	Value	Measuring Method
Max. particle size	15.56 μ m or less	Laser diffraction scattering
D50	3.0~5.0 μ m	Laser diffraction scattering
Apparent density	0.45~0.65g/ml	JIS-K6891
Melting point	310 - 320 $^{\circ}$ C	TG-DSC
Heat resistance	250 $^{\circ}$ C	TG-DSC

KTL-8N Particle Distribution



SEM



3. Applications

Paint & Coating (Anti-scratch, Sliding, Non-stick)

Heat or UV set plastic paint, Coil coating, Clear coating, Powder coating, Thermoplastic elastomer,

General-purpose plastics, Grease, Oil, Rubber

FDA Regulatory Information: 21 CFR 175.300

KITAMURA LIMITED

Web: <http://www.kitamuraltd.jp/>

Email: info@kitamuraltd.jp

