



Technical Data Sheet

KTL-450A

PTFE Micropowder

KTL-450A is the PTFE micropowder as additive for engineering plastics and coatings. KTL-450A drastically reduces wear and the friction factor.

1. Features

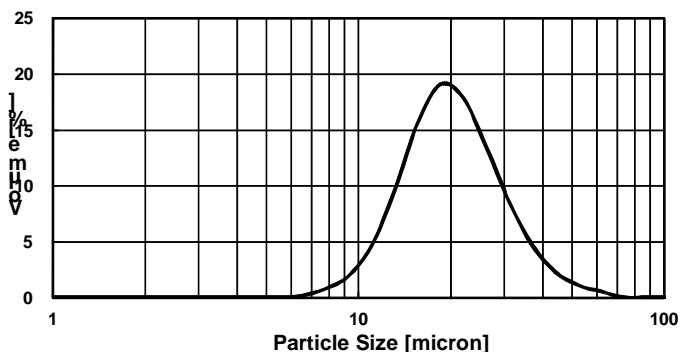
KTL-450A is the fine powder of completely sintered PTFE. KTL-450A is the enhanced grade of KTL-450 to meet higher temperature stability.

KTL-450A can be fed into kneaders directly by side feeding because of its excellent flow property. Minute mass or shape change around the melting point, contributing to high stability in mold strength and size. Small melt flow and bleed out over the melting point.

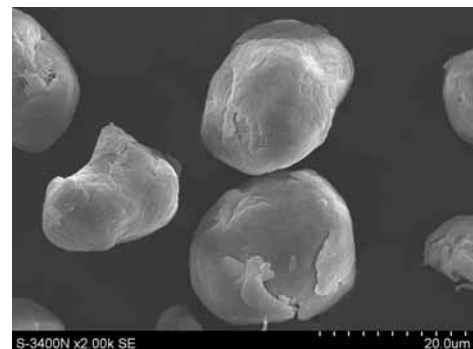
2. Property

Property	Value	Measuring Method
Max. particle size	88.00 μ m	Laser diffraction scattering
D50	20.00 μ m or less	Laser diffraction scattering
Apprent density	0.50 – 0.70g/ml	JIS-K6891
Melting point	325 – 330°C	DSC
Heat resistance	430°C	TG

KTL-450A Particle Distribution



SEM



3. Applications

Engineering plastic (PPS, PI, PAI, PEI, PSU, PA, PC, POM etc.), Rubber, Elastomer, Coating

FDA Regulatory Information: 21 CFR 177.1550, 21 CFR 175.300

KITAMURA LIMITED

Web: <http://www.kitamura ltd.jp/>

Email: info@kitamura ltd.jp

