



Technical Data Sheet

KT-600M

PTFE Micropowder

KT-600M is the PTFE micropowder as additive for engineering plastics.
KT-600M drastically reduces wear and the friction factor.

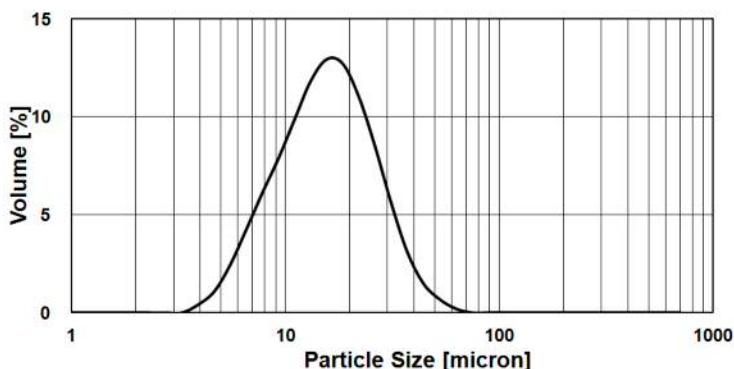
1. Features

KT-600M is the fine powder of completely sintered PTFE. KT-600M has the highest heat resistance in our products. KT-600M does not generate thermal decomposition gas at high temperatures (400°C or higher). KT-600M does not flow over the melting point, retaining uniform dispersion at high temperatures.

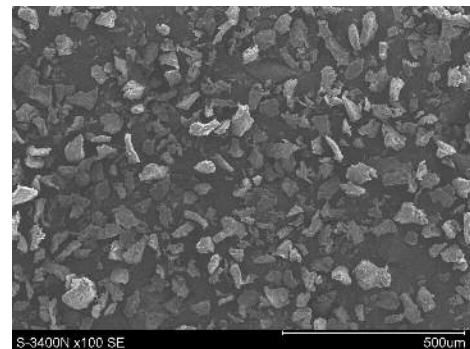
2. Property

Property	Value	Measuring Method
Max. particle size	74.00µm or less	Laser diffraction scattering
D50	14.00±2.00µm	Laser diffraction scattering
Apprent density	0.40 g/ml or more	JIS-K6891
Melting point	330 – 335°C	TG-DSC
Heat resistance	450°C or higher	TG-DSC

KT-600M Particle Distribution



SEM



3. Applications

Engineering plastic (PEEK, LCP, PI, PAI, PEI, POM etc.), Rubber, Elastomer
FDA Regulatory Information: 21 CFR 177.1550, 21 CFR 175.300

KITAMURA LIMITED

Web: <http://www.kitamuralttd.jp/>

Email: info@kitamuralttd.jp

