

**Krefine<sup>®</sup>**

## Special Carbon Material

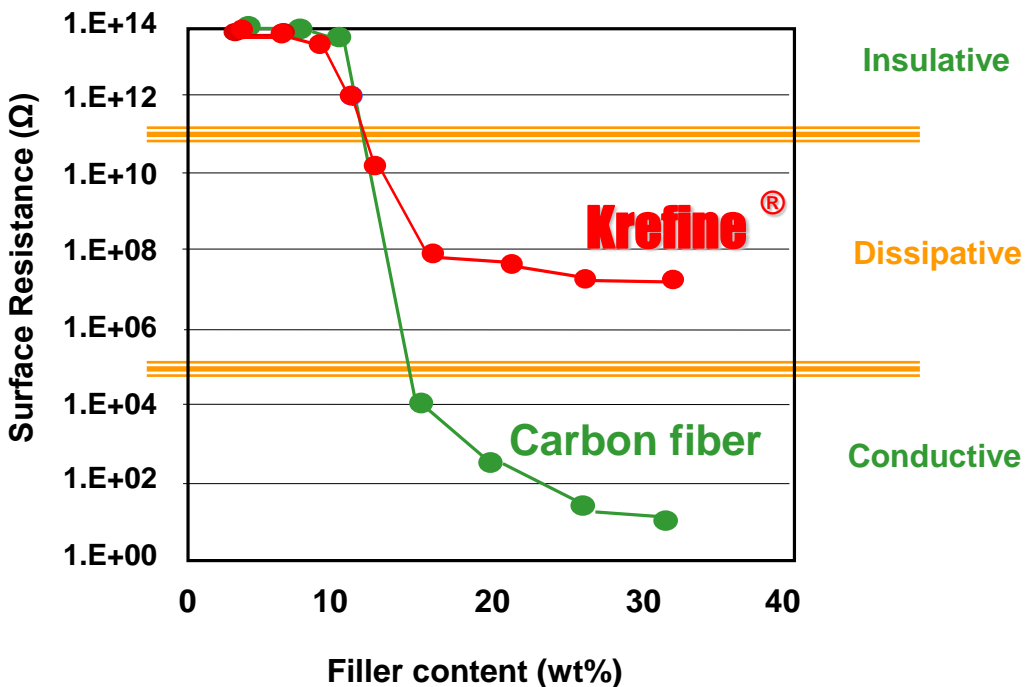
### Abstract

- Kureha Extron developed Krefine Special Carbon Material made from petroleum pitch.
- Krefine Special Carbon Material has the unique electrical property and less density than those of general carbon materials.
- Krefine Special Carbon Material is able to control product's surface resistance precisely, and to lighten product weight.



### Characteristics

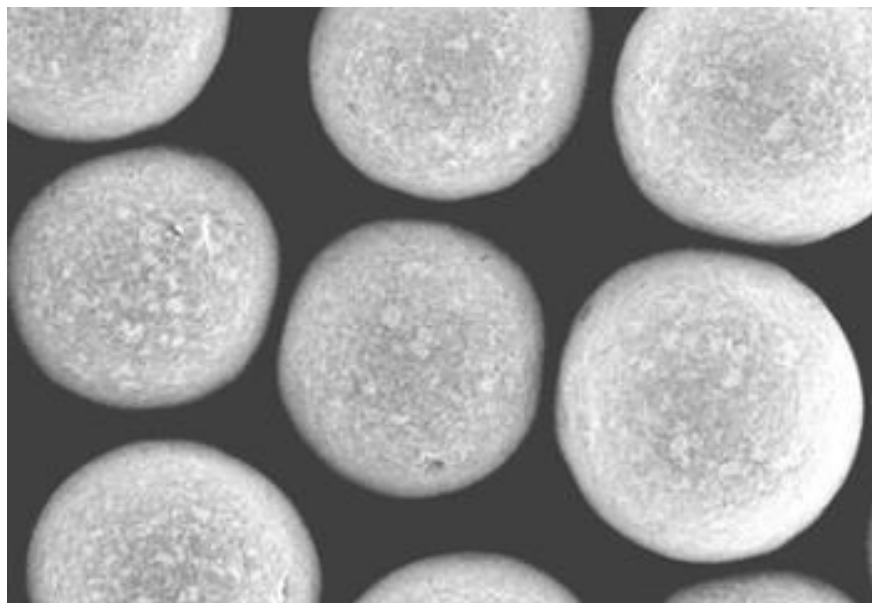
Comparison of surface resistance between carbon fiber filled polymer material and special carbon filled polymer material



**Properties for Krefine Special Carbon Material**

Properties	Method	Units	Krefine Special Carbon	
			Powder	Bead
Carbon Content			>90%	>90%
Volume resistivity	JIS K7194	$\Omega \cdot \text{cm}$	E+07	E+07
Density		g/cm <sup>3</sup>	1.4	1.4
Bulk specific gravity		g/cc	0.53	
Mean diameter		$\mu \text{m}$	22	500
Shape			Granular	Sphere

**Photo of Krefine Special Carbon Material (Beads)**



All technical information of Kureha Extron's products is based upon tests reliable and practical field experience.  
 Kureha Extron Co.,Ltd does not guarantee the accuracy or completeness of this information